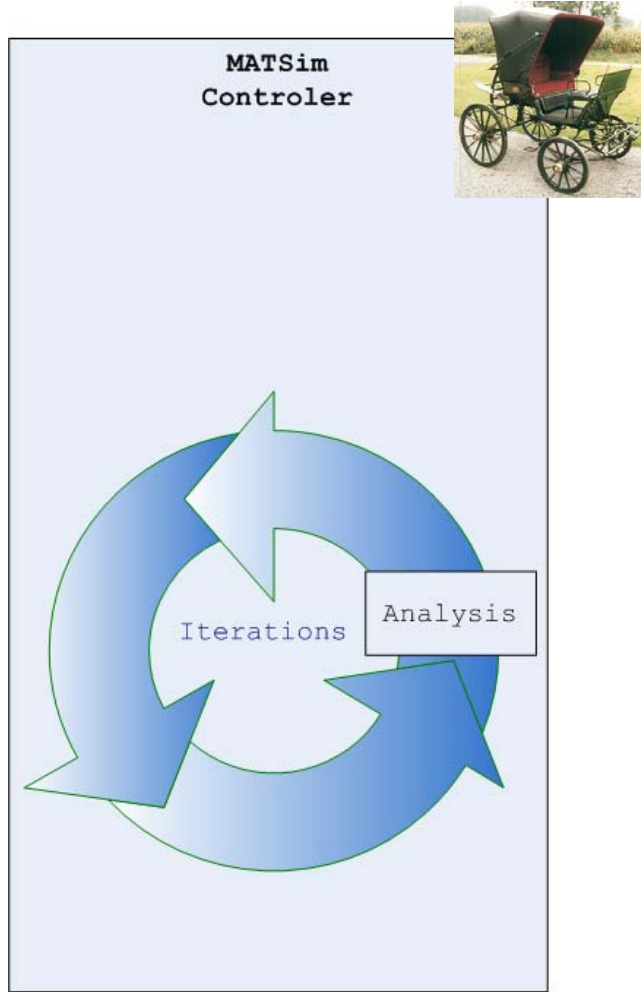


## Counts

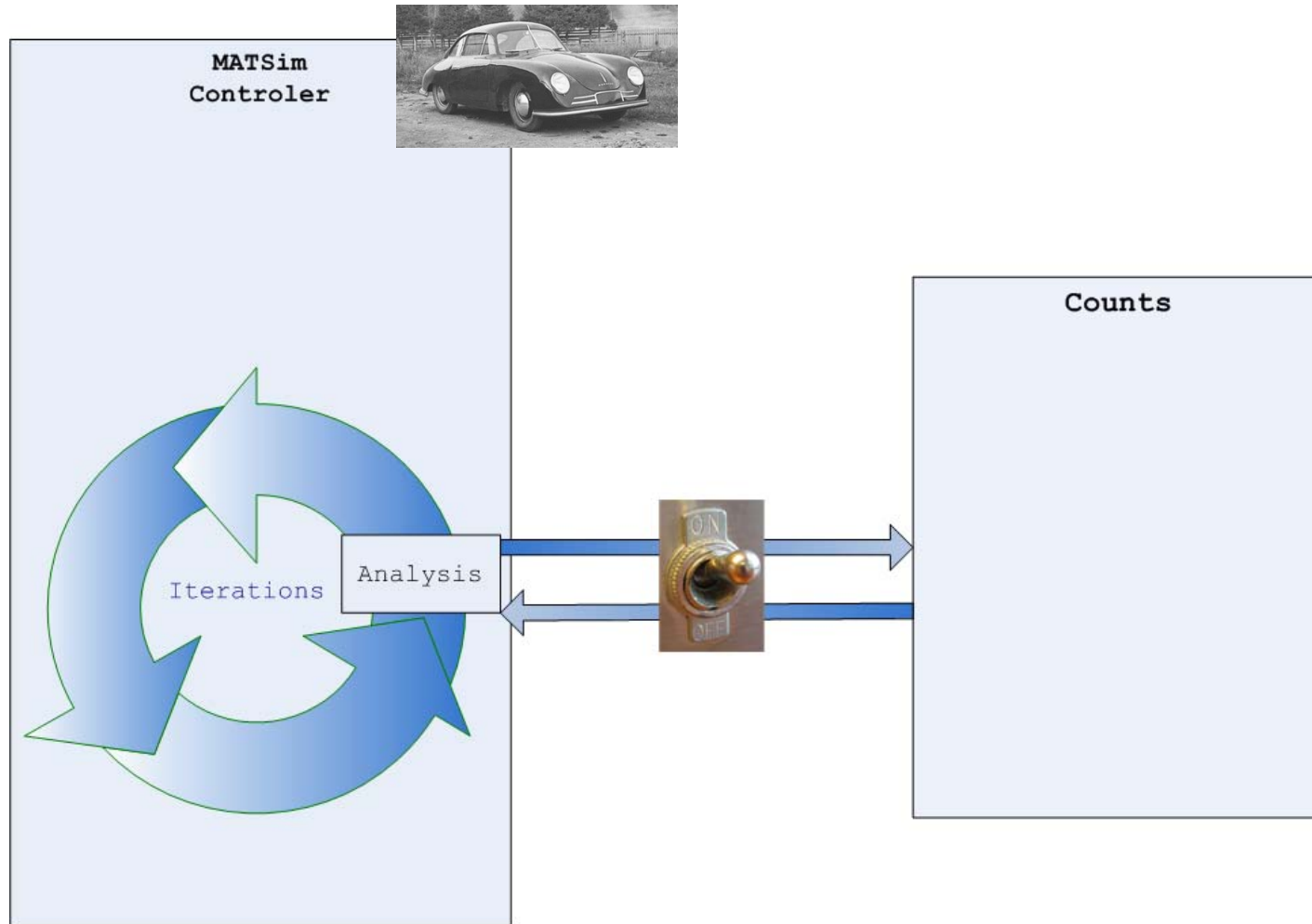
D. Grether & A. Horni



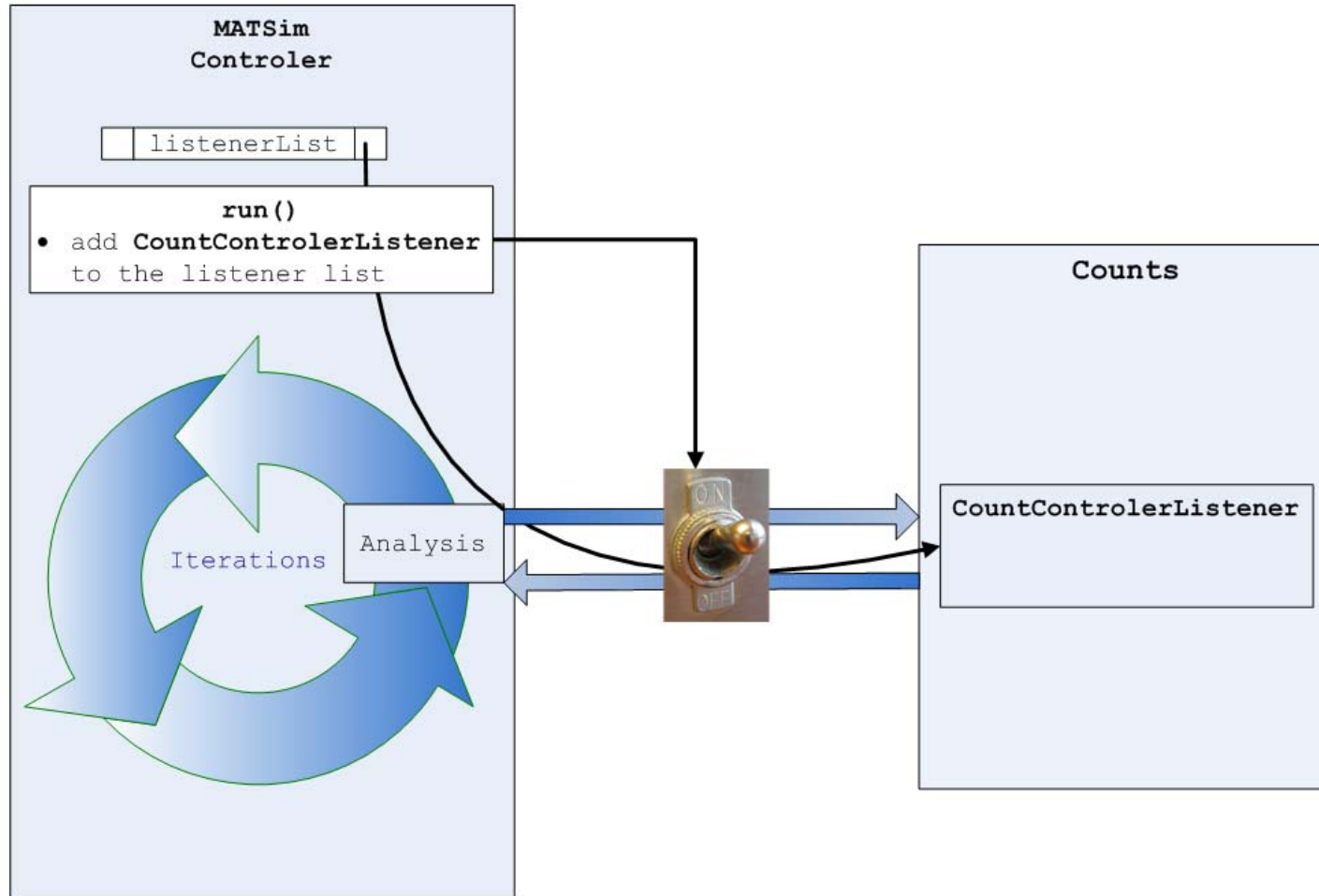
- Producing comparison results in a MATSim run
- Counting data > representative MATSim day
- Big picture of the package working mechanisms
- Extending counts



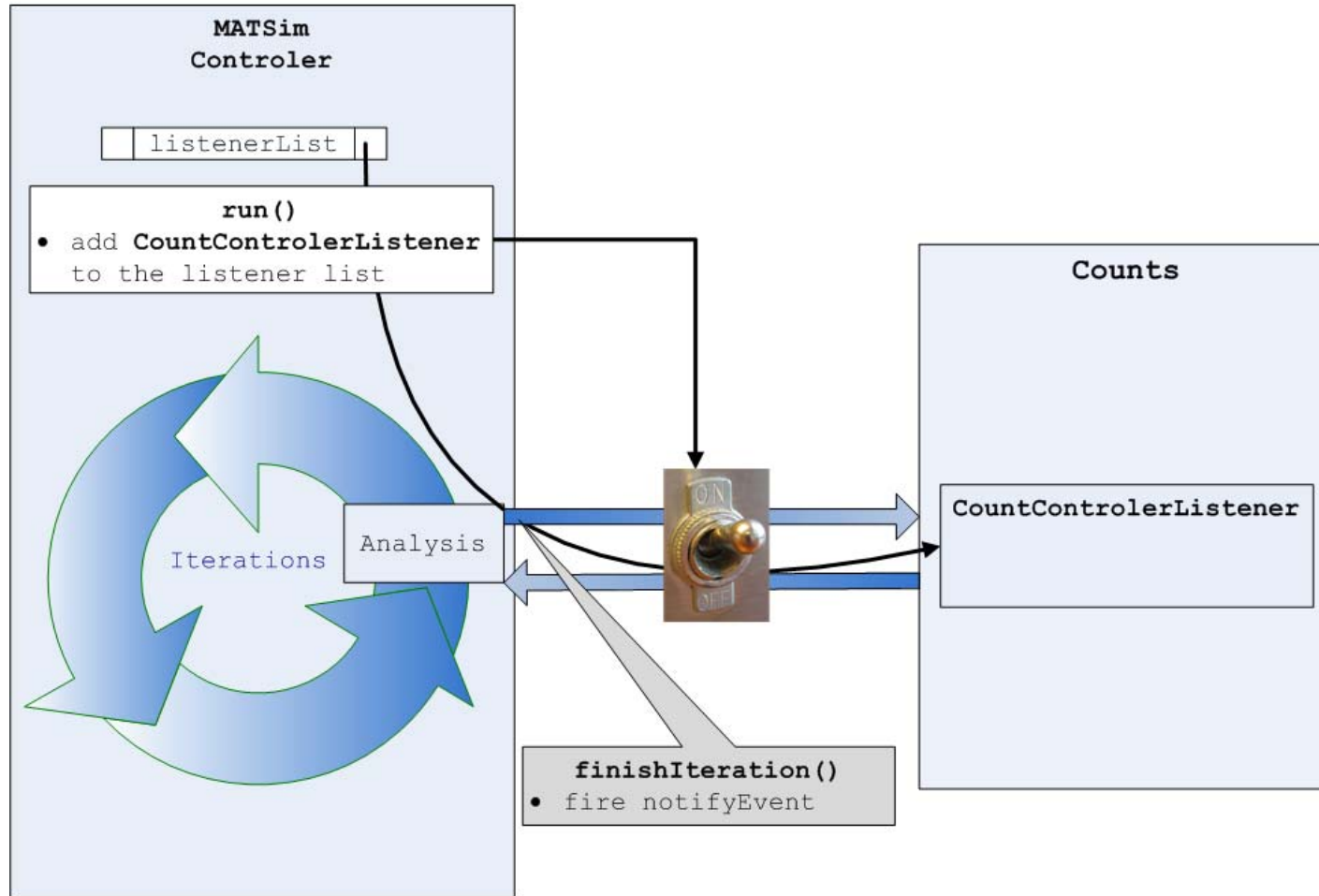
# Counts Linking



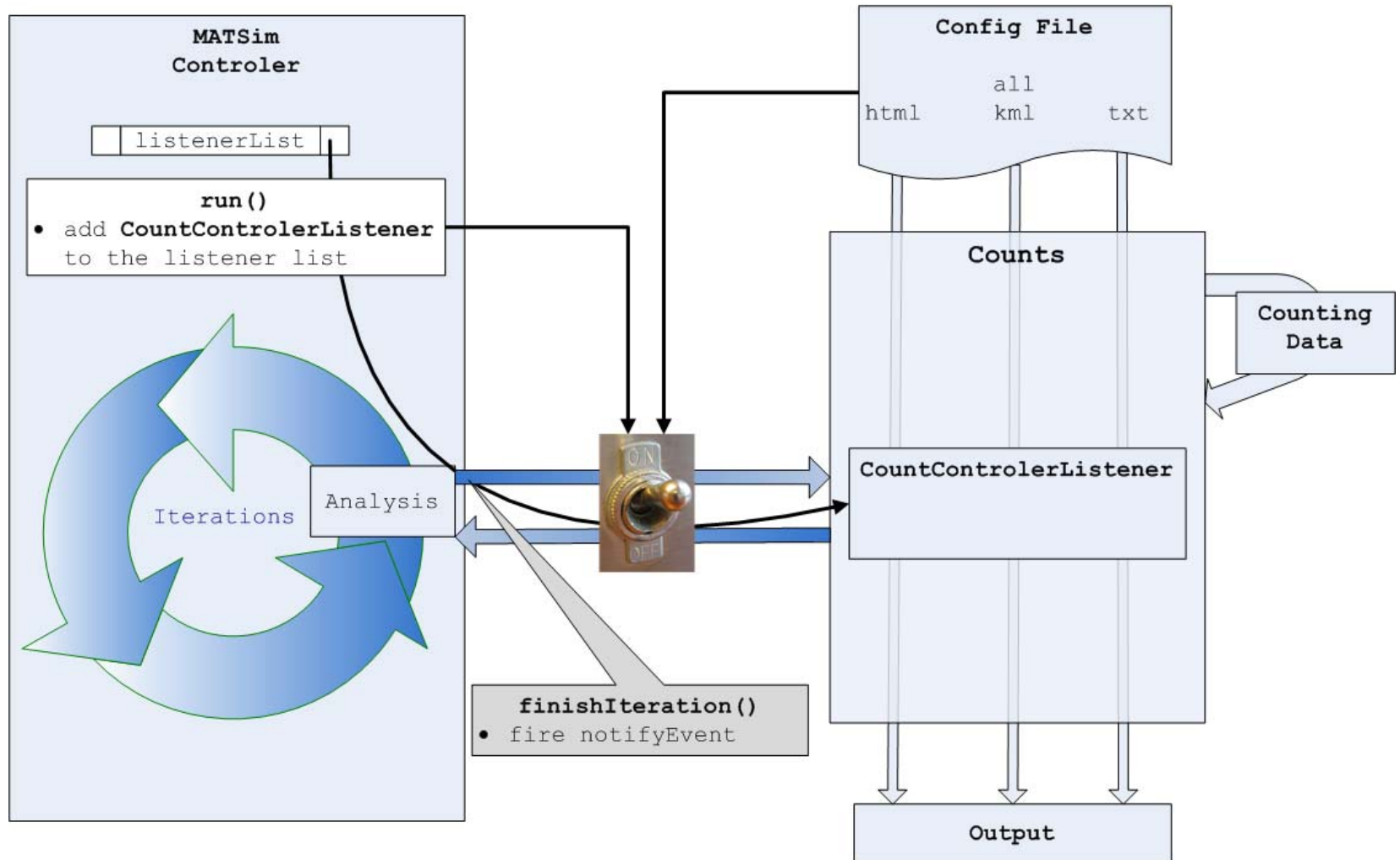
# Counts Linking



# Counts Linking



# Counts Structure



## CONFIG.XML

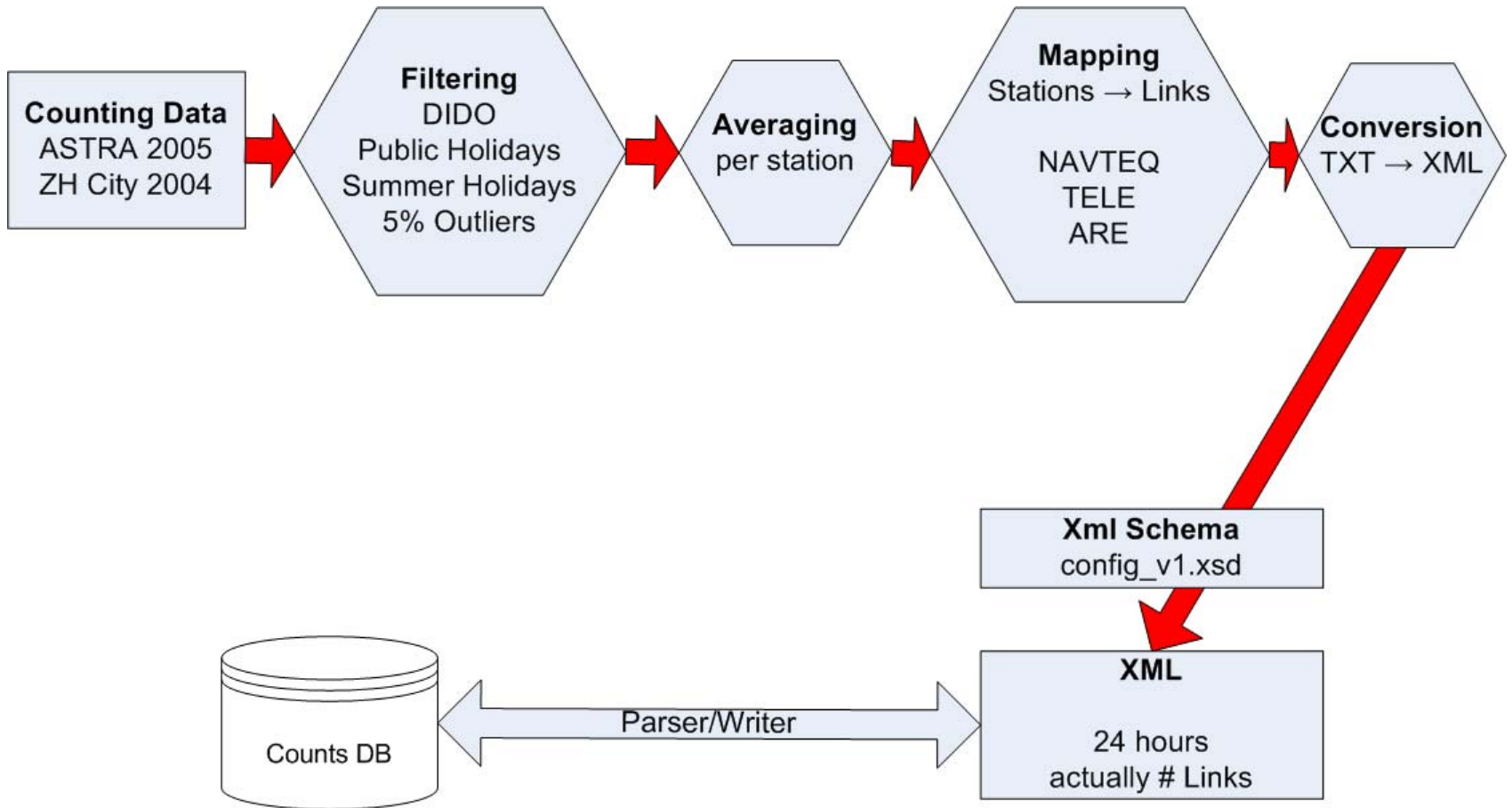
```
...
<!-- ----- -->

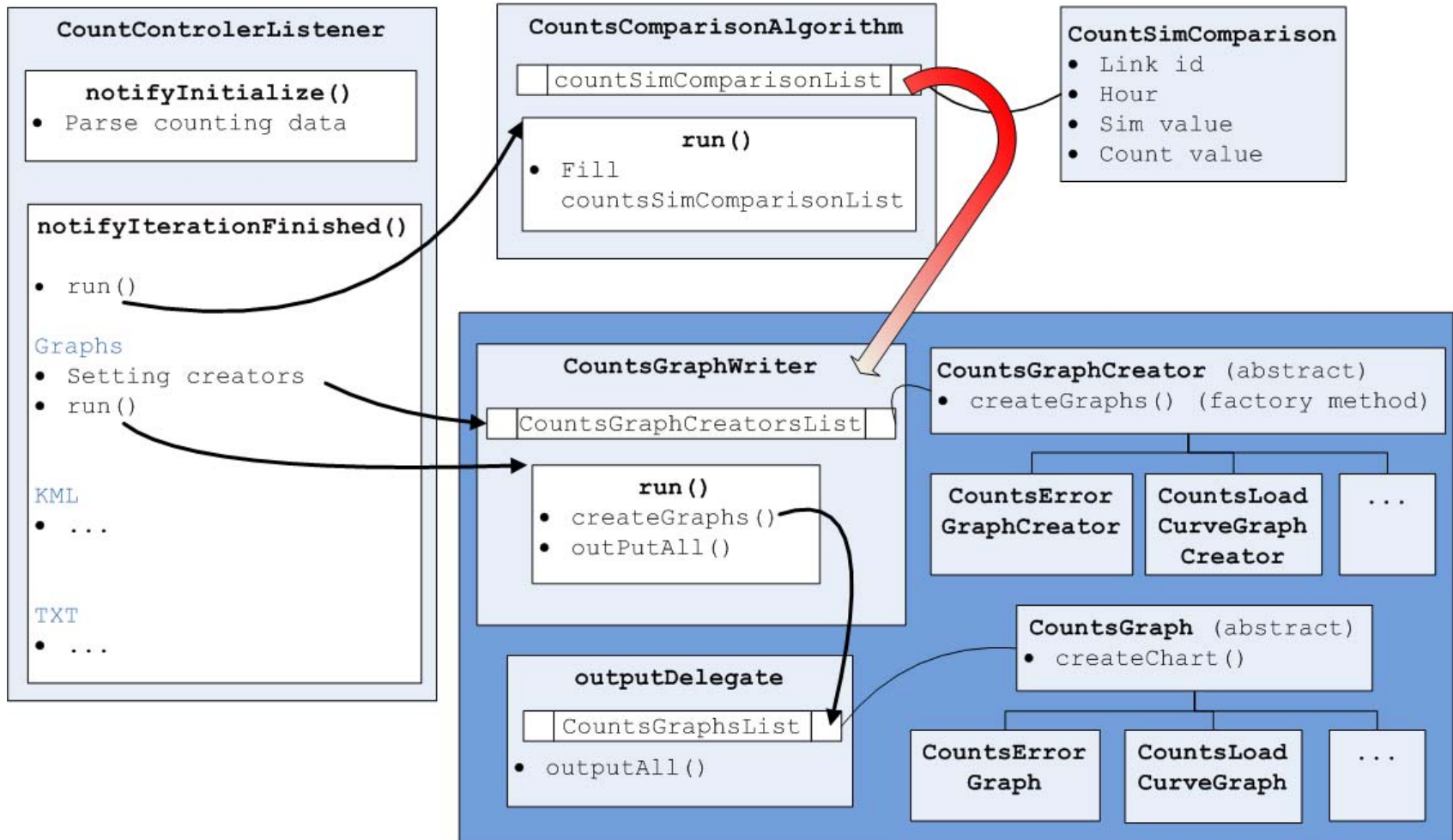
<module name="counts">
  <param name="inputCountsFile" value="..." />
  <param name="localInputXSD" value="...xsd" />
  <param name="outputCountsFile" value="..." />
  <param name="outputCountsXSD" value="...xsd" />
  <param name="outputVersion" value="v1" />
  <param name="outputformat" value="{all|html|kml|txt}" />
  <param name="countsScaleFactor" value="..." />
  <param name="linkattributes" value="..." />
  <param name="iterationNumber" value="..." />

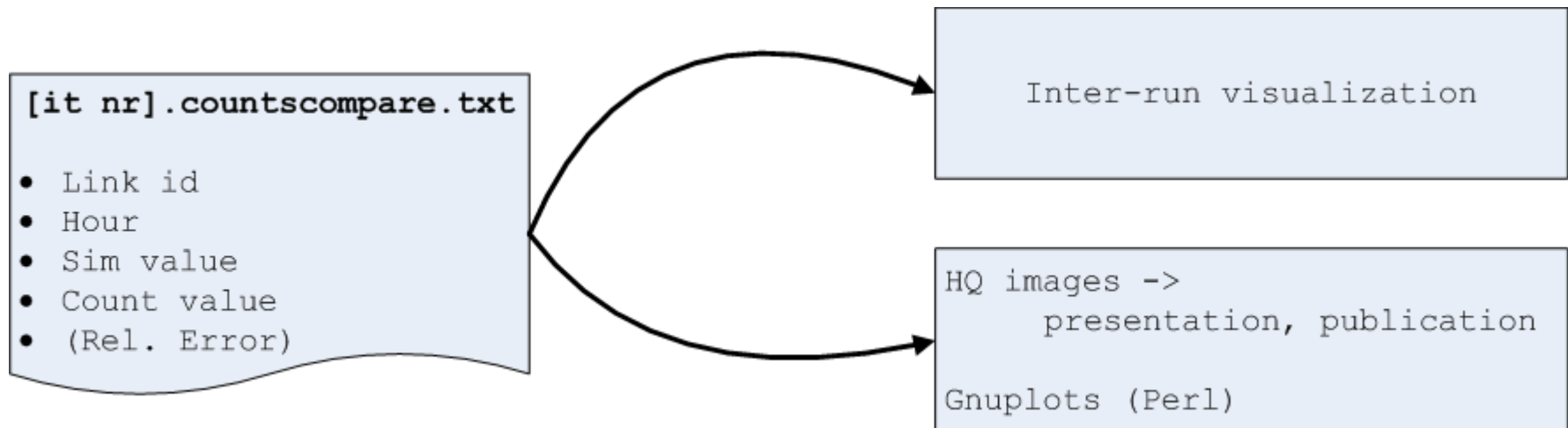
  <param name="distanceFilterCenterNode" value="..." />
  <param name="distanceFilter" value="..." />
  <param name="timeFilter" value="..." />
  <param name="visibleTimeStep" value="..." />
</module> <!-- counts -->

<!-- ----- -->
...
```

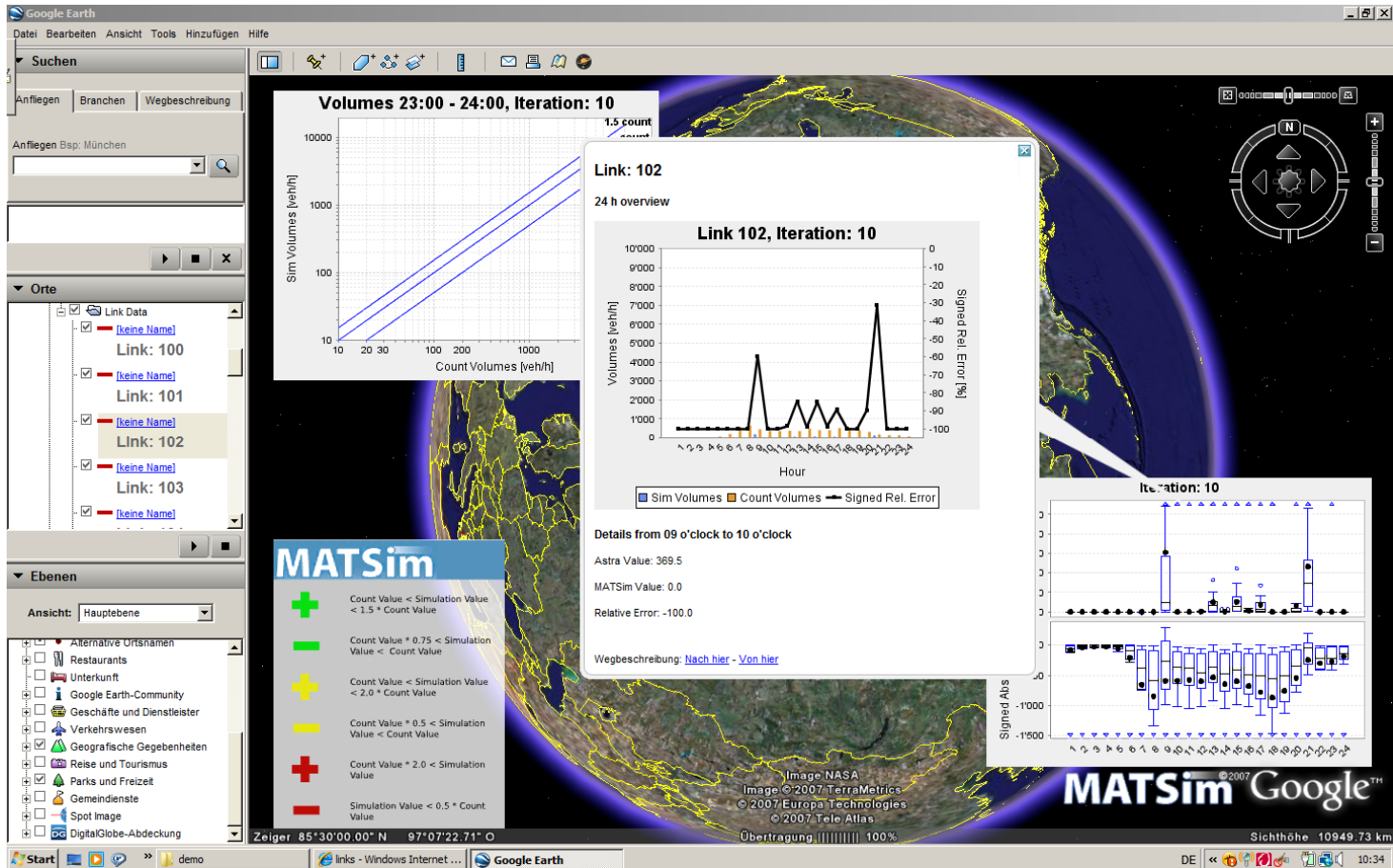
# Counts Structure

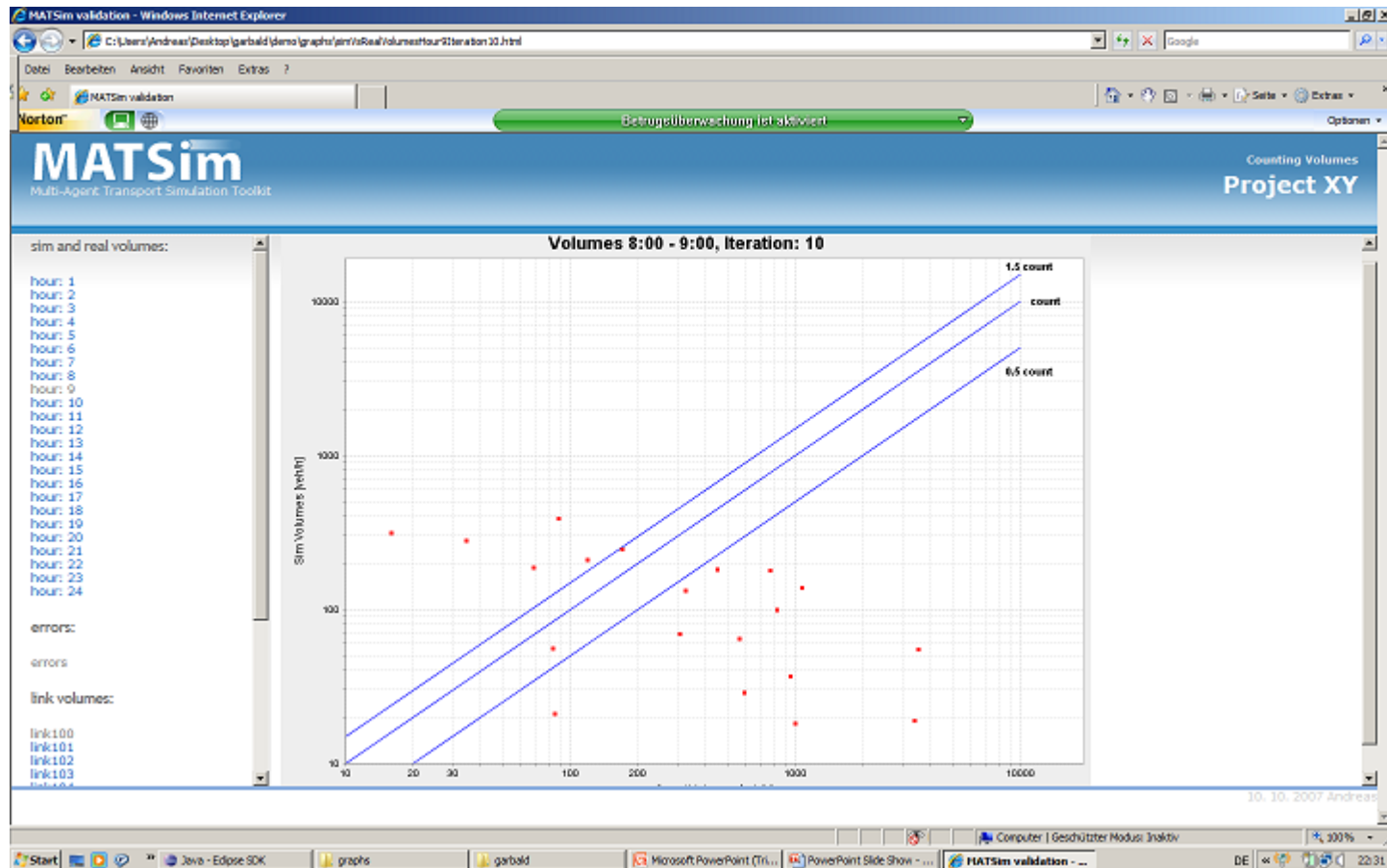






# Output - Google Earth





- Graphs: single files – (png & pdf)
  - Use in *Google Earth, Html-Output, ...*
  - Opensoucre libraries:
    - jFreeChart 1.0.6 (modified)
    - iText
- KML Details
  - Compressed kml file
  - Own library

# Future Tasks

- Comparison of two different runs
- Open question: external tool or integration in *Controler*?
- Output optimized for
  - Publication
  - Presentation
  - Displaying on monitor
- Performance tests/improvements
- Extend documentation
- Two new graph types KWA

- Remarks, suggestions, questions, ...?